

Berks County Census 2020 Update

Berks County Planning Commission
September 2023



Census 2020

- Constitutionally mandated decennial count of persons and housing units
- ‘Short form’, only 10 questions
 - Age, gender, race, Hispanic Origin, relationship, housing unit, rent vs. own
- ‘Long form’ information no longer collected, relegated to the American Community Survey
 - Income, education, occupation, vehicle ownership, workforce, others

Census 2020

- Three major releases to date:
 - Apportionment Results (April 26, 2021)
 - Used to determine # House representatives in each state
 - Statewide data only
 - P.L. 94-171 Legislative Redistricting File (August 12, 2021)
 - Total persons, Voting-age population, Race/Hispanic Origin, Total housing units, Occupied vs. Vacant
 - Block-level data
 - **Demographic Profiles and Demographic & Housing Characteristics (DHC) (May 25, 2023)**
 - **Geography varies by product and data**

Census 2020

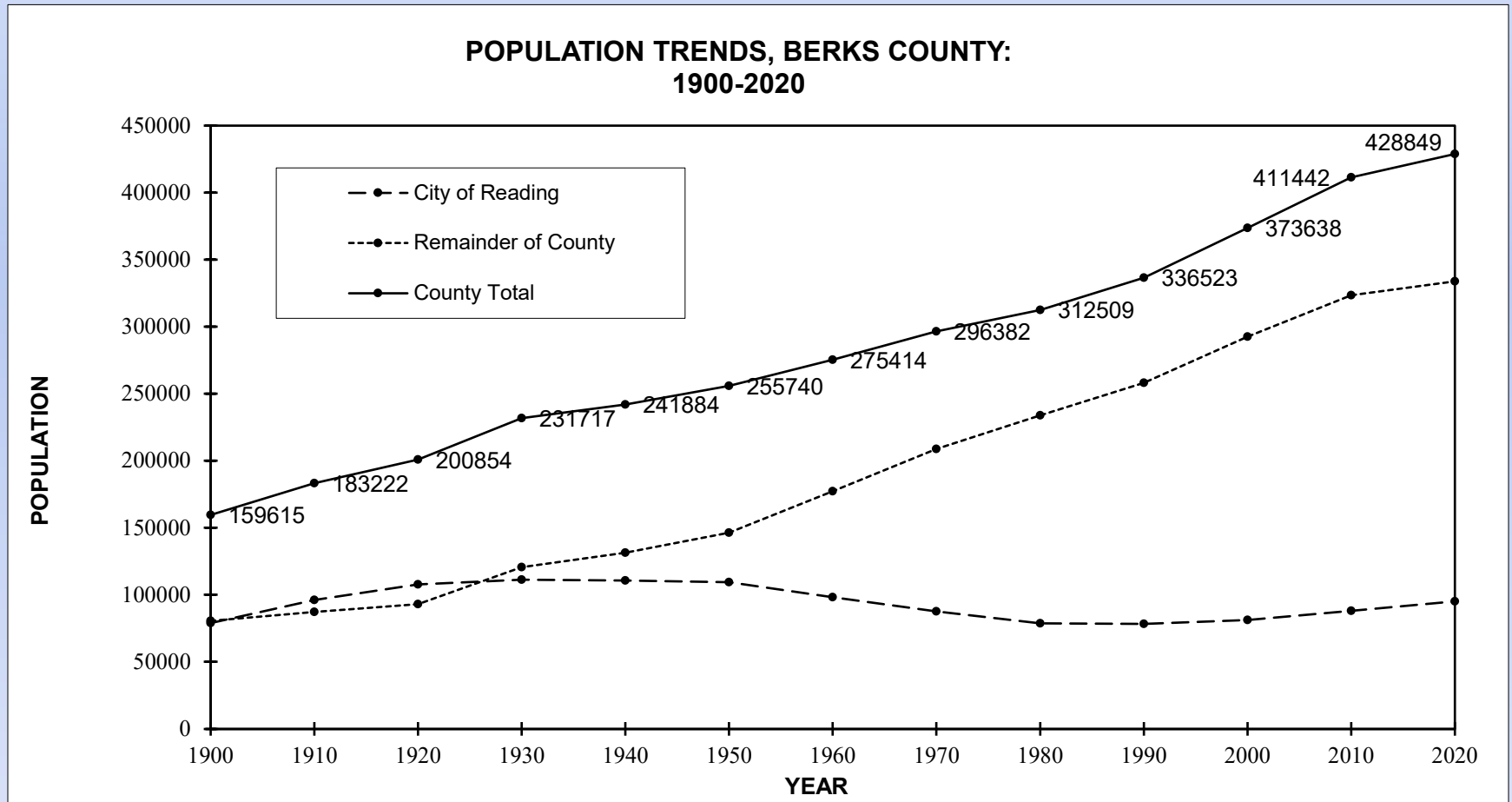
Berks and Surrounding County Populations, 2000-2020

County Population Between 2000 and 2020					
County	2000	2010	2020	% Change 00-10	% Change 10-20
Berks	373,638	411,850	428,849	10.2%	4.1%
Chester	433,501	499,797	534,413	15.3%	6.9%
Lancaster	470,658	520,156	552,984	10.5%	6.3%
Lebanon	120,327	133,688	143,257	11.1%	7.2%
Lehigh	312,090	350,106	374,557	12.2%	7.0%
Montgomery	750,097	801,052	856,553	6.8%	6.9%
Schuylkill	150,336	148,228	143,049	-1.4%	-3.5%
Pennsylvania	12,281,054	12,702,379	13,002,700	3.4%	2.4%
United States	281,421,906	308,745,538	331,449,281	9.7%	7.4%

- Southeast PA still the 'hot spot' of growth in PA, but still slower than prior decades
- Berks down from ~10% decade-to-decade growth in prior decennial Censuses

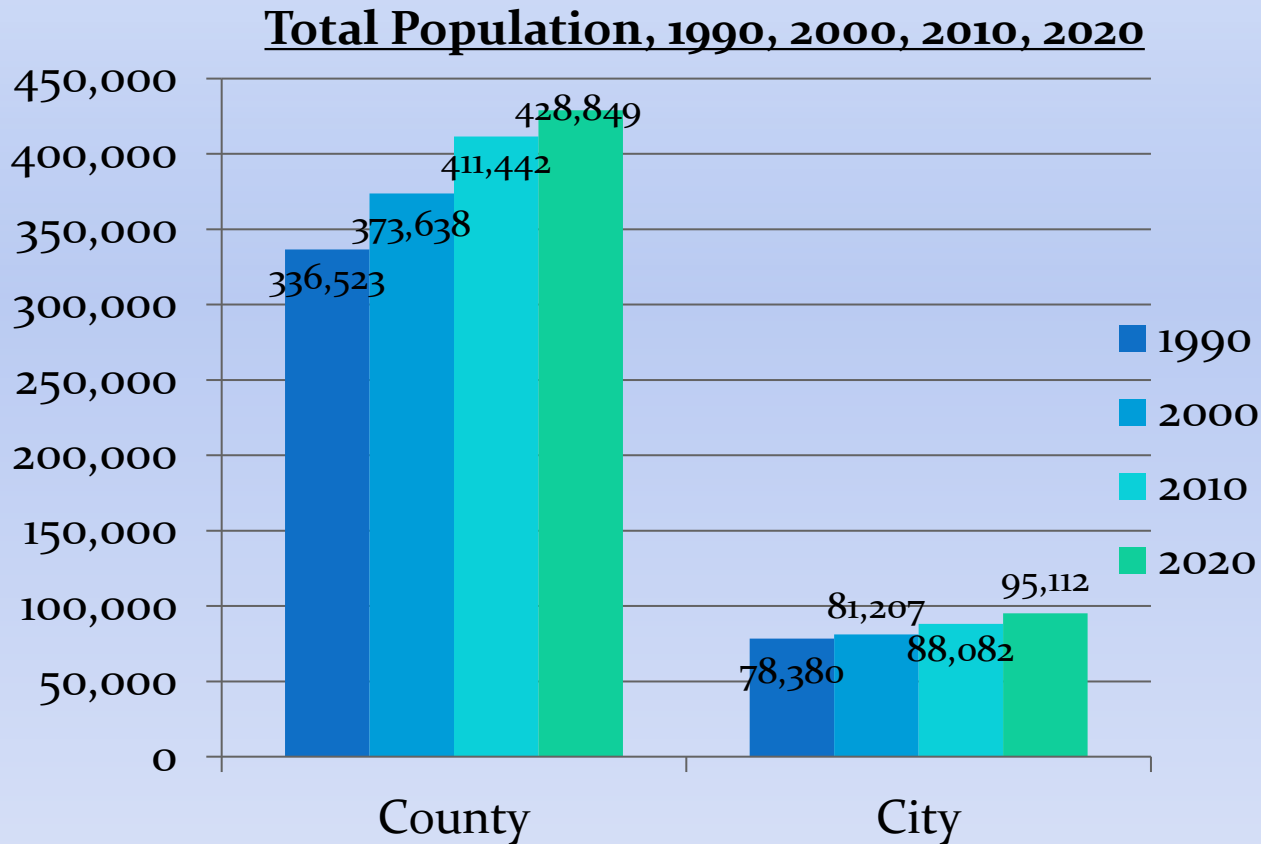


Census 2020



- Chart showing long-term trends for Berks County (continued growth since 1900), the City of Reading (peaked in 1930, declined until 1980, and growing again since) and the County minus the City's contribution.

Census 2020



- Another way of showing continued growth since 1990.



Census 2020

Top 10 Largest Municipalities by Total Population

Municipality				Change 2010 - 2020	
	2000	2010	2020	Number	Percent
Berks County	373,638	411,442	428,849	17,407	4.2%
Reading city	81,207	88,082	95,112	7,030	8.0%
Spring township	23,402	27,119	28,407	1,288	4.7%
Exeter township	21,161	25,550	25,466	-84	-0.3%
Muhlenberg township	16,305	19,628	21,915	2,287	11.7%
Cumru township	13,816	15,147	15,619	472	3.1%
Amity township	8,867	12,583	13,396	813	6.5%
Wyomissing borough	11,155	10,461	11,114	653	6.2%
Maidencreek township	6,553	9,126	9,169	43	0.5%
South Heidelberg township	5,491	7,271	7,663	392	5.4%
Robeson township	6,869	7,216	7,538	322	4.5%

- Looks at the County's ten (10) largest municipalities by population and their change from 2010.



Census 2020

- Out of 73 municipalities (including Adamstown part),
 - Had growth in 46 (63%), adding 20,916 persons;
 - Had declines in 27 (37%), subtracting 3,509 persons;
 - Most of the declines were in suburban/rural boroughs and rural townships

Census 2020

COUNTY AND CITY RACE AND HISPANIC ORIGIN: 2010 AND 2020 CENSUS

	Total Population	Single Race Reported (includes Hispanic or Latino)						Two or More Races	Hispanic or Latino, any race
		White	Black or African American	American Indian & Alaska Native	Asian	Native Hawaiian & Other Pacific Islander	Some Other Race		
BERKS COUNTY									
2010	411,442	342,148	20,143	1,285	5,385	128	32,101	10,252	67,355
Percent of Total	100.0%	83.2%	4.9%	0.3%	1.3%	0.0%	7.8%	2.5%	16.4%
2020	428,849	309,107	21,992	2,252	6,413	170	50,270	38,645	99,550
Percent of Total	100.0%	72.1%	5.1%	0.5%	1.5%	0.0%	11.7%	9.0%	23.2%
CITY OF READING									
2010	88,082	42,617	11,624	794	1,039	72	26,538	5,398	51,230
Percent of Total	100.0%	48.4%	13.2%	0.9%	1.2%	0.1%	30.1%	6.1%	58.2%
2020	95,112	28,519	10,799	1,446	807	71	35,747	17,723	65,591
Percent of Total	100.0%	30.0%	11.4%	1.5%	0.8%	0.1%	37.6%	18.6%	69.0%

SOURCES: U.S. Census Bureau, 2010 Census Summary File 1; 2020 Census, P.L. 94-171 Legislative Redistricting File

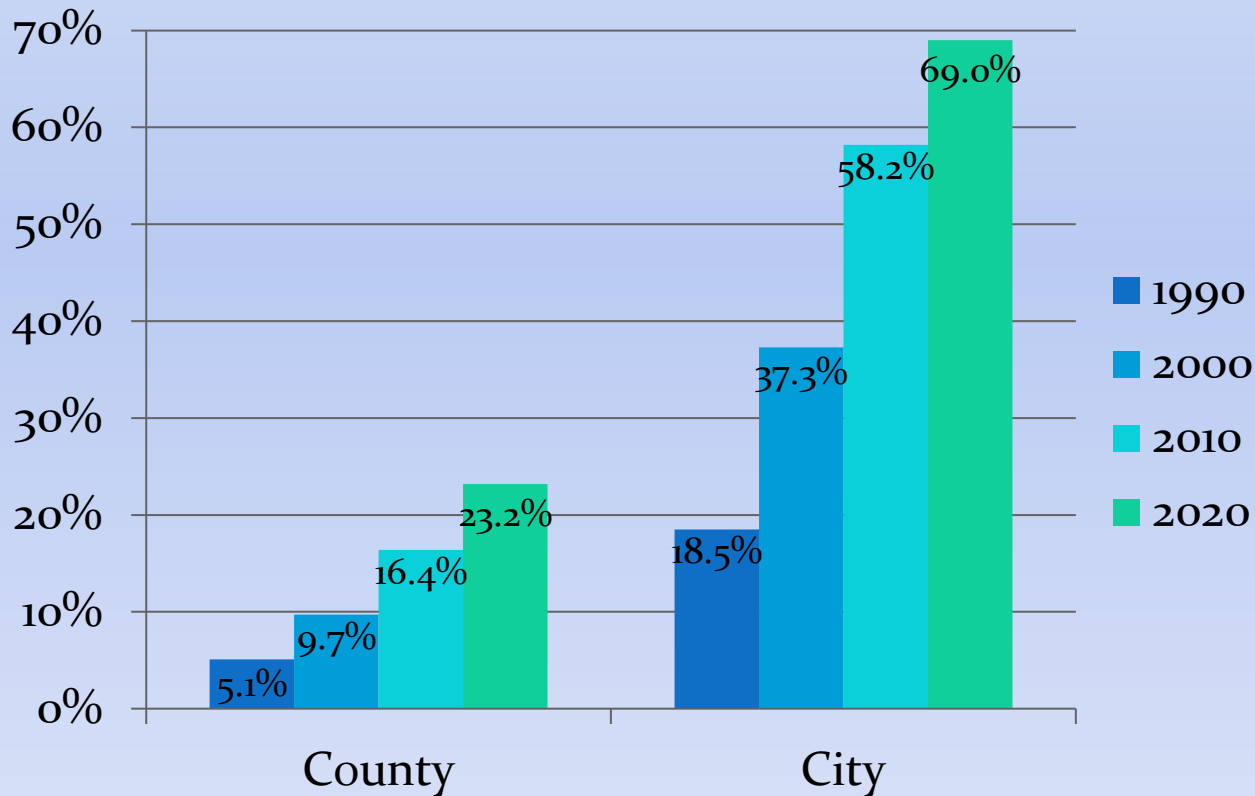
CREATED BY: Berks County Planning Commission, 8/13/2021



- Berks County is becoming increasingly diverse,
- City of Reading losing in some race groups, gaining in others

Census 2020

Latino Percentage of Total Population, 1990, 2000, 2010, 2020

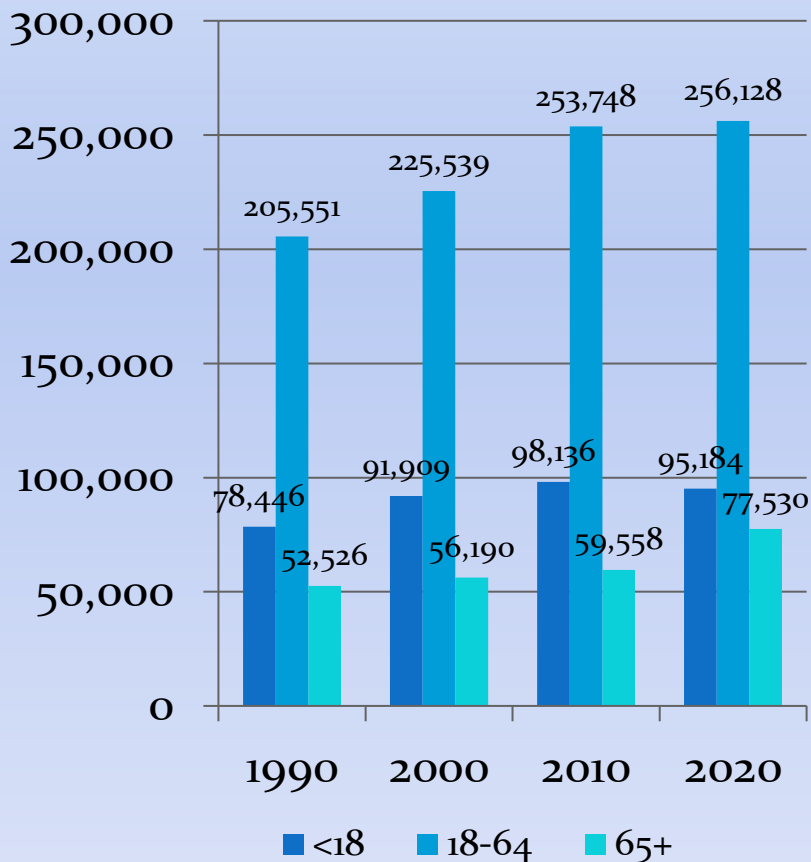


- Growth in Latino population countywide and in the City. Almost 70 percent of City residents are Latino.

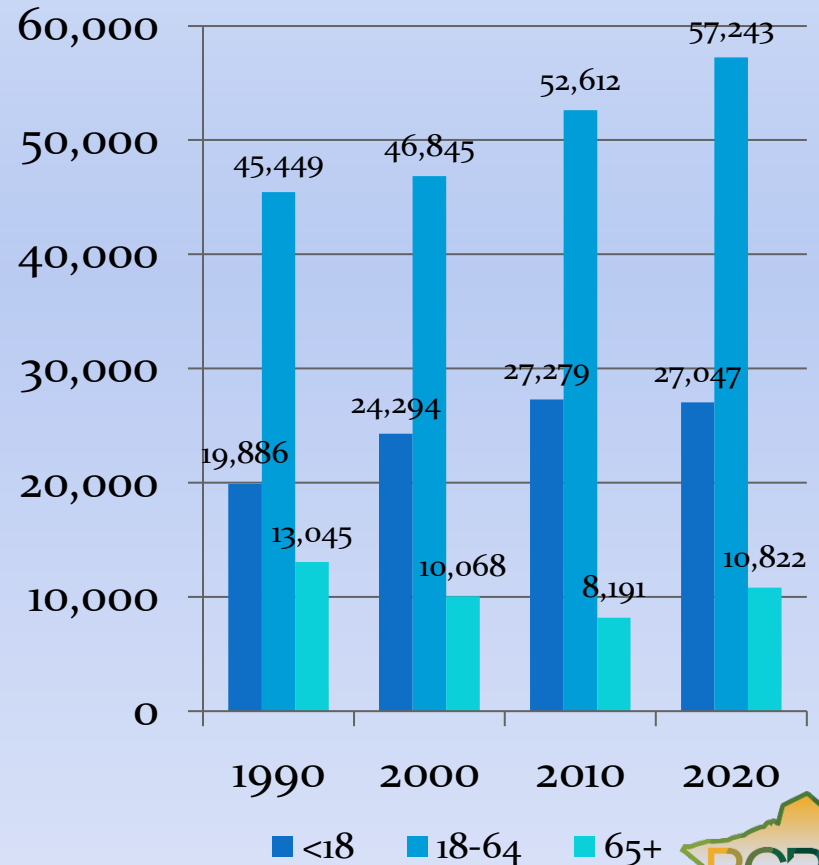


Census 2020

Age Categories, 1990, 2000, 2010, 2020



County

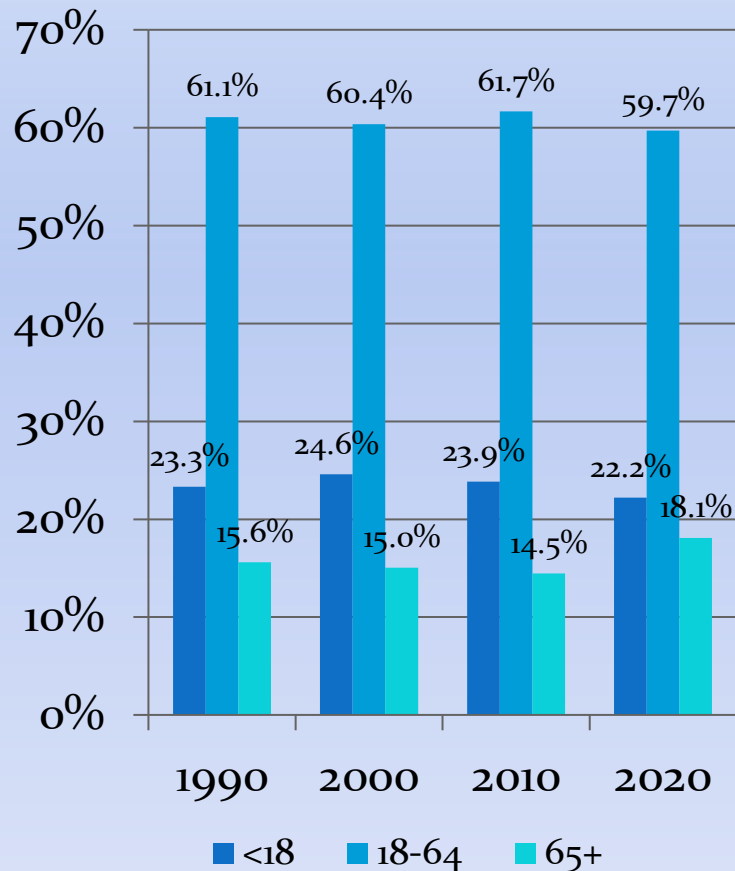


City

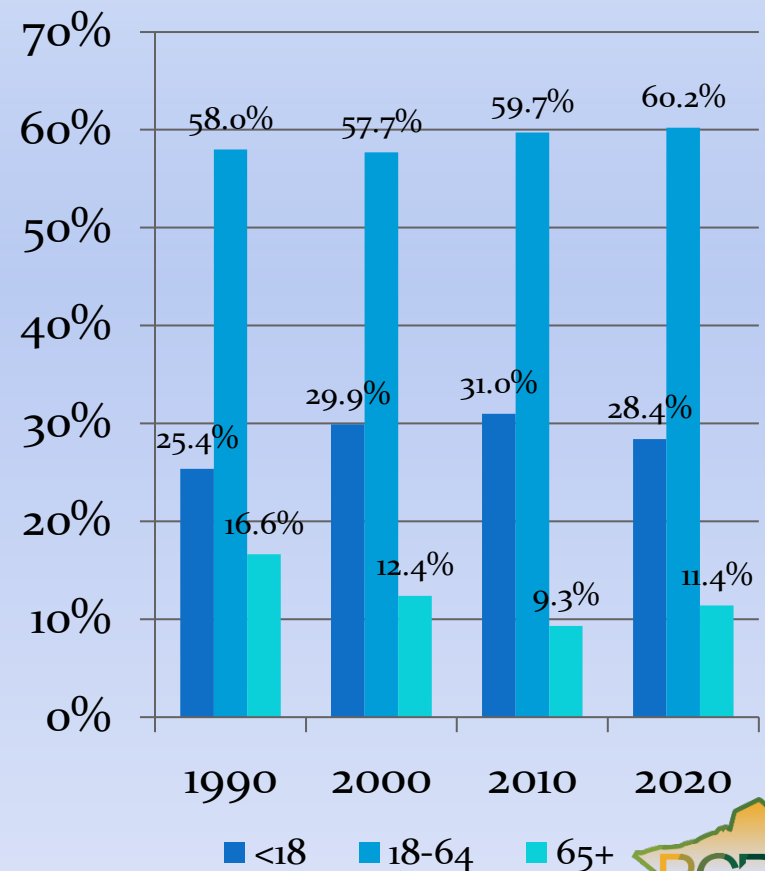


Census 2020

Age Categories, 1990, 2000, 2010, 2020



County



City



Census 2020

NAME	SD_TOT_POP (2020)	SD_18+_POP (2020)	SD_<18_POP (2020)	SD_<18_POP (2010)	NUM_GROWTH_<18 (2010-2020)	%_GROWTH_<18 (2010-2020)
Antietam School District	7,956	6,114	1,842	1,711	131	7.66%
Boyerstown Area School District (Pt.)	22,698	18,367	4,331	4,438	-107	-2.41%
Brandywine Heights Area School District	12,632	10,401	2,231	2,626	-395	-15.04%
Conrad Weiser Area School District	20,150	15,999	4,151	4,320	-169	-3.91%
Daniel Boone Area School District	22,388	17,348	5,040	5,789	-749	-12.94%
Exeter Township School District	27,358	21,731	5,627	6,496	-869	-13.38%
Fleetwood Area School District	16,821	13,211	3,610	4,158	-548	-13.18%
Governor Mifflin School District	31,624	25,460	6,164	6,444	-280	-4.35%
Hamburg Area School District	17,659	14,322	3,337	3,614	-277	-7.66%
Kutztown Area School District	17,050	14,577	2,473	2,633	-160	-6.08%
Muhlenberg School District	26,192	20,367	5,825	5,020	805	16.04%
Oley Valley School District	13,237	10,891	2,346	2,725	-379	-13.91%
Reading School District	95,112	68,065	27,047	27,279	-232	-0.85%
Schuylkill Valley School District	15,702	12,598	3,104	2,987	117	3.92%
Tulpehocken Area School District	12,870	9,709	3,161	3,133	28	0.89%
Twin Valley School District (Pt.)	11,826	9,079	2,747	2,916	-169	-5.80%
Upper Perkiomen School District (Pt.)	2,962	2,406	556	591	-35	-5.92%
Wilson School District	41,286	32,415	8,871	8,556	315	3.68%
Wyomissing Area School District	13,326	10,598	2,728	2,700	28	1.04%
BERKS TOTAL	428,849	333,658	95,191	98,136	-2,945	-3.00%
NOTE: (Pt.) refers to Berks County portion only of total school district						

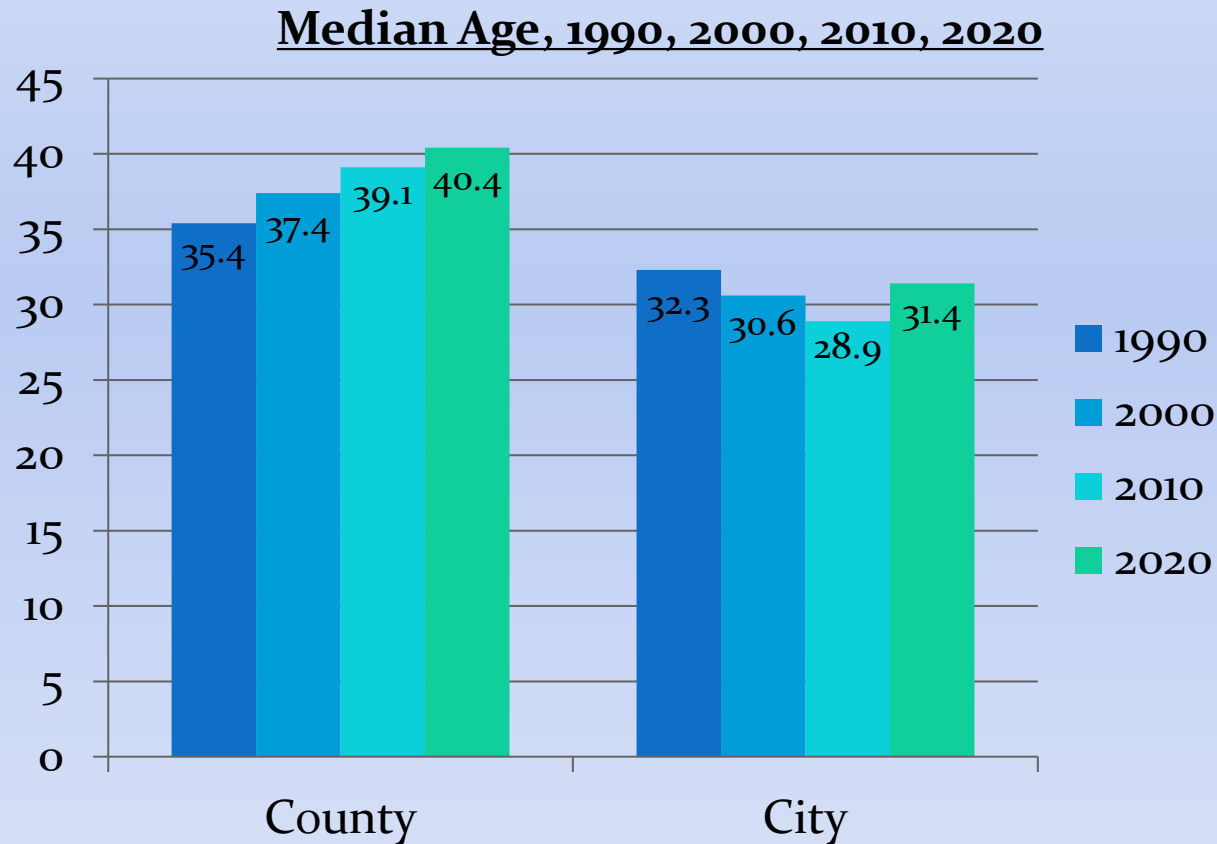
- Berks County overall lost 2,945 student-age persons...

Census 2020

NAME	SD_TOT_POP (2020)	SD_18+_POP (2020)	SD_<18_POP (2020)	SD_<18_POP (2010)	NUM_GROWTH_<18 (2010-2020)	%_GROWTH_<18 (2010-2020)
Antietam School District	7,956	6,114	1,842	1,711	131	7.66%
Boyertown Area School District (Pt.)	22,698	18,367	4,331	4,438	-107	-2.41%
Brandywine Heights Area School District	12,632	10,401	2,231	2,626	-395	-15.04%
Conrad Weiser Area School District	20,150	15,999	4,151	4,320	-169	-3.91%
Daniel Boone Area School District	22,388	17,348	5,040	5,789	-749	-12.94%
Exeter Township School District	27,358	21,731	5,627	6,496	-869	-13.38%
Fleetwood Area School District	16,821	13,211	3,610	4,158	-548	-13.18%
Governor Mifflin School District	31,624	25,460	6,164	6,444	-280	-4.35%
Hamburg Area School District	17,659	14,322	3,337	3,614	-277	-7.66%
Kutztown Area School District	17,050	14,577	2,473	2,633	-160	-6.08%
Muhlenberg School District	26,192	20,367	5,825	5,020	805	16.04%
Oley Valley School District	13,237	10,891	2,346	2,725	-379	-13.91%
Reading School District	95,112	68,065	27,047	27,279	-232	-0.85%
Schuylkill Valley School District	15,702	12,598	3,104	2,987	117	3.92%
Tulpehocken Area School District	12,870	9,709	3,161	3,133	28	0.89%
Twin Valley School District (Pt.)	11,826	9,079	2,747	2,916	-169	-5.80%
Upper Perkiomen School District (Pt.)	2,962	2,406	556	591	-35	-5.92%
Wilson School District	41,286	32,415	8,871	8,556	315	3.68%
Wyomissing Area School District	13,326	10,598	2,728	2,700	28	1.04%
BERKS TOTAL	428,849	333,658	95,191	98,136	-2,945	-3.00%
NOTE: (Pt.) refers to Berks County portion only of total school district						

- ...affecting 13 of the 19 school districts that serve Berks County municipalities.
- Only 6 districts saw increases in school-age population.

Census 2020



- Berks County is continuing to become older as a community.
- The City, after decades of declining Median Age, is also becoming older.



Reading, PA Urban Area Update

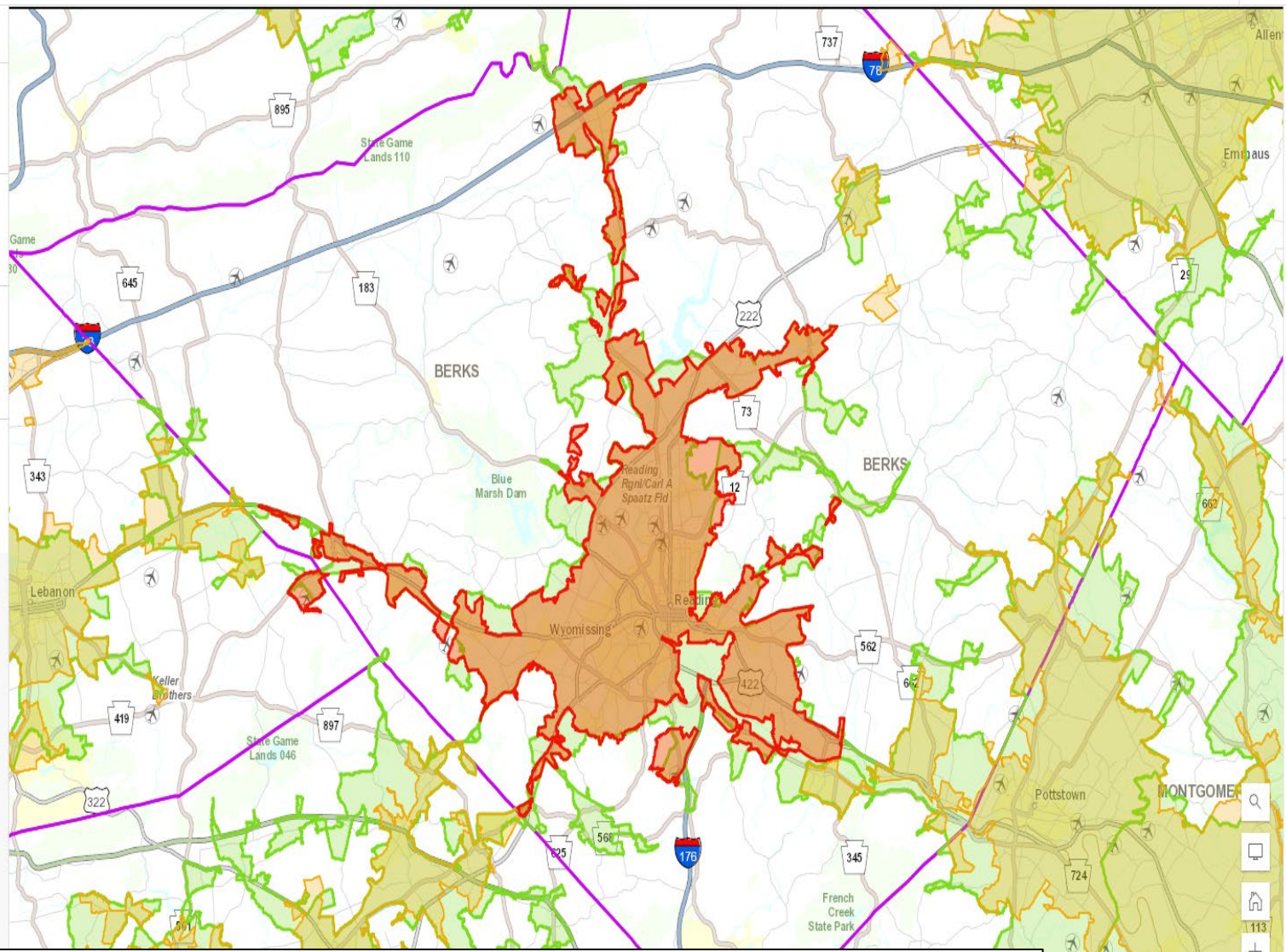
	Total Population	Urban Area Population	Percent Urban
2010 Decennial Census	411,442	266,254	64.7%
2020 Decennial Census	428,849	276,278	64.4%

- ‘Urban Areas’ have been designated by the U.S. Census Bureau since the 1950 Decennial Census as a way to track the growth and development of the Nation after WW II.
- Every ten years, the Bureau revised the criteria used to determine ‘Urban’ vs. ‘Rural’. For the first time, housing was used as a determining factor, along with population density and proximity to development centers.
- Although Berks County gained Urban population since 2020, the overall percentage had a slight decline.



Legend

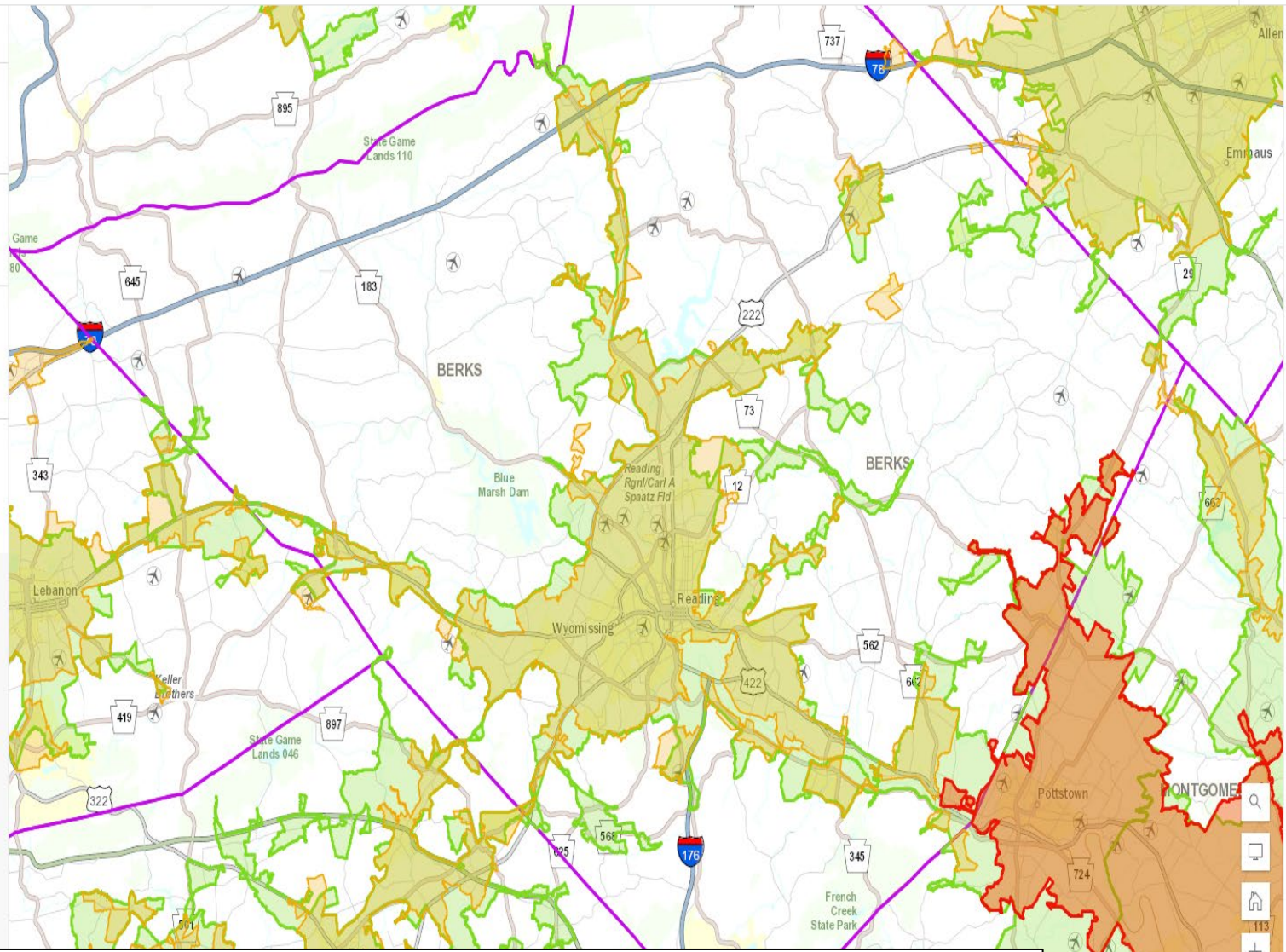
- Reading 2020 UA - Reading 2020 UA
- 2020 Census Urban Area - 2020 Census Urban Area
- 2010 Smoothed Urban Areas - 2010 Smoothed Urban Areas
- Planning Organization Boundary - Planning Organization Boundary



- Red area shows 2020 Census-defined Reading Urban Area.
- Kutztown/Lyons and Birdsboro/Amity are now their own Urban Areas.

Legend

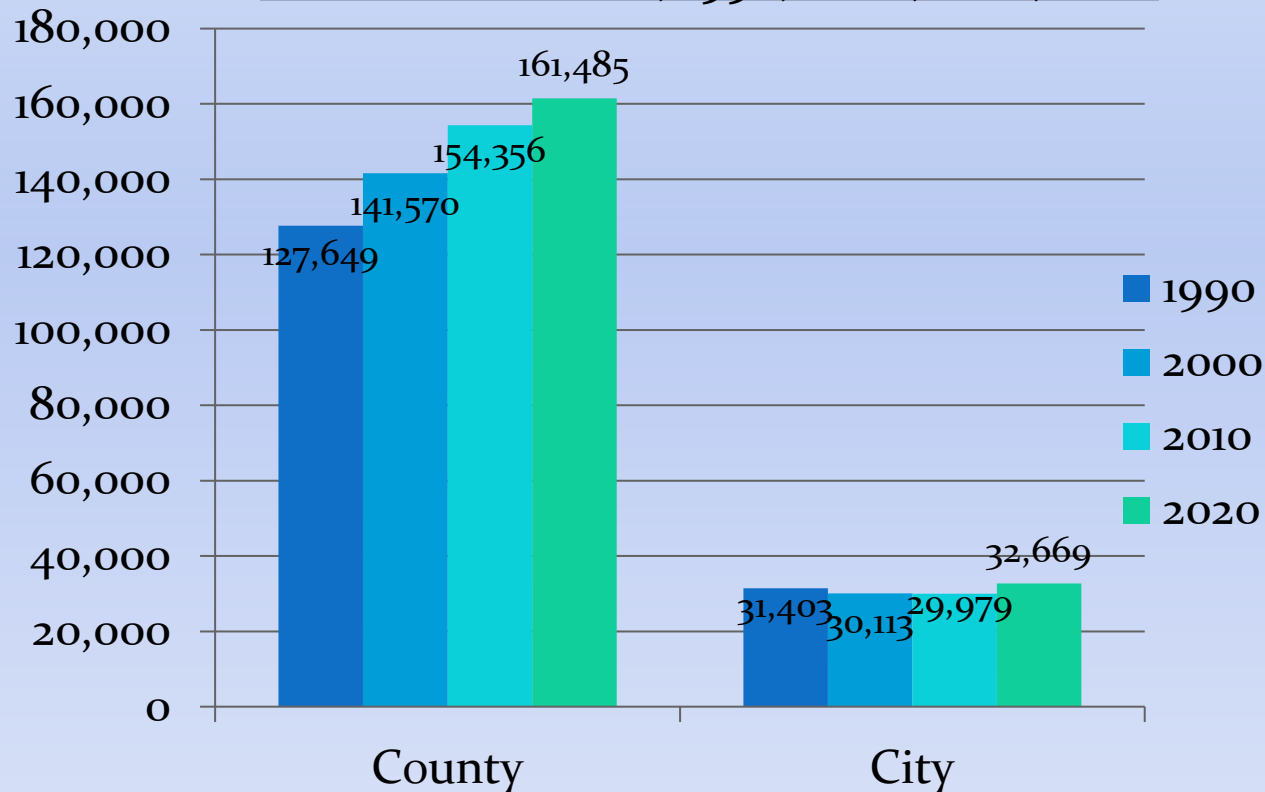
- Philadelphia 2020 UA - Philadelphia 2020 UA
- 2020 Census Urban Area - 2020 Census Urban Area
- 2010 Smoothed Urban Areas - 2010 Smoothed Urban Areas
- Planning Organization Boundary - Planning Organization Boundary



• The former Pottstown Urban Area has been absorbed into the Philadelphia PA-NJ-DE-MD Urban Area, which now extends into eastern Berks County.

Census 2020

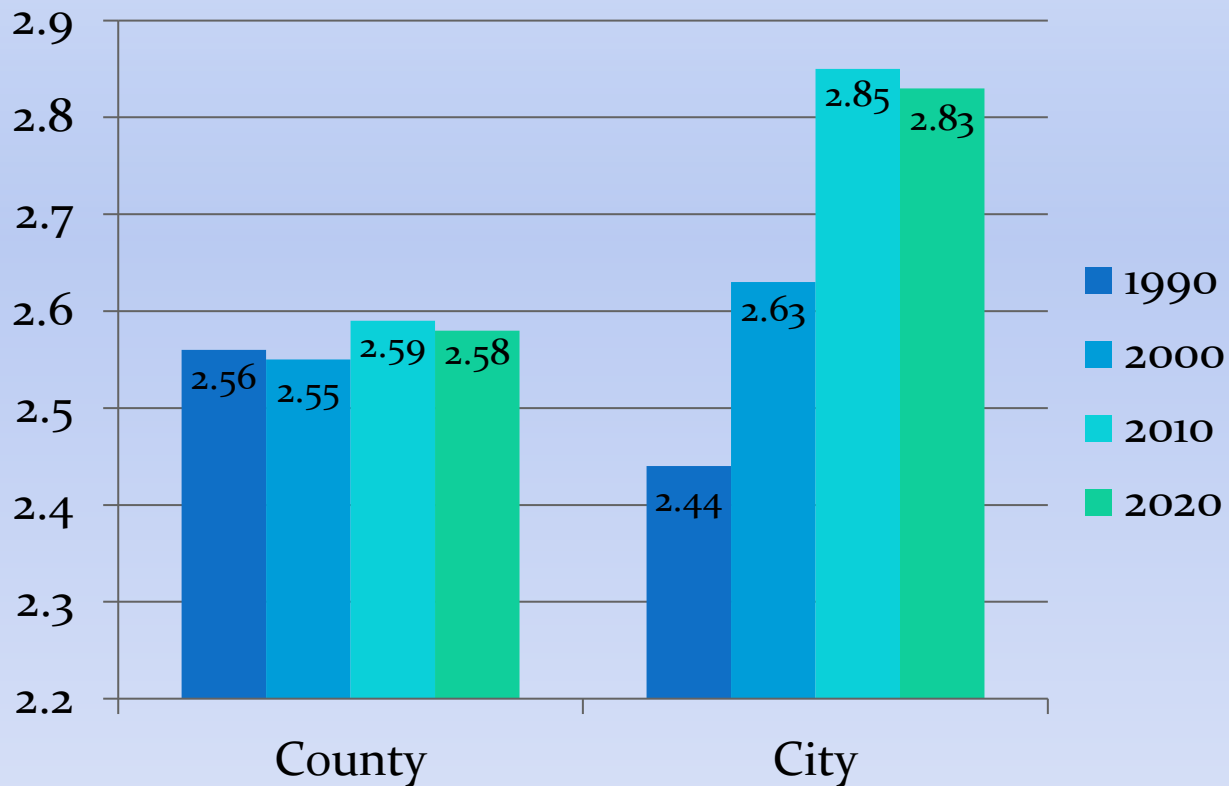
Total Households, 1990, 2000, 2010, 2020



- A Household is an occupied housing unit with one or more persons living there.
- Household growth in Berks, though positive, slowed compared to previous decades.
- After years of decline, household growth in the City increased.

Census 2020

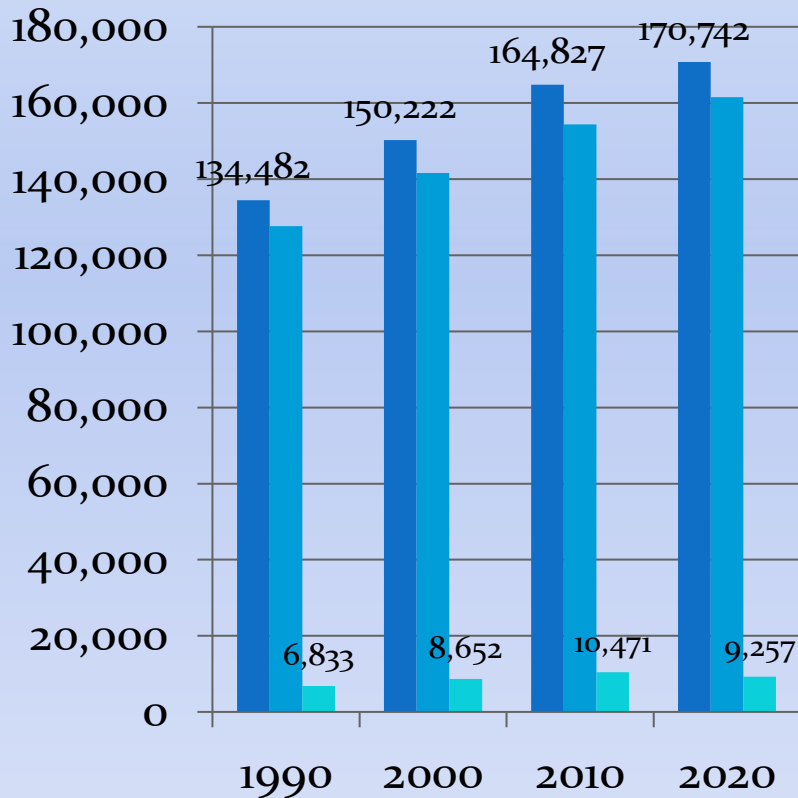
Persons Per Household, 1990, 2000, 2010, 2020



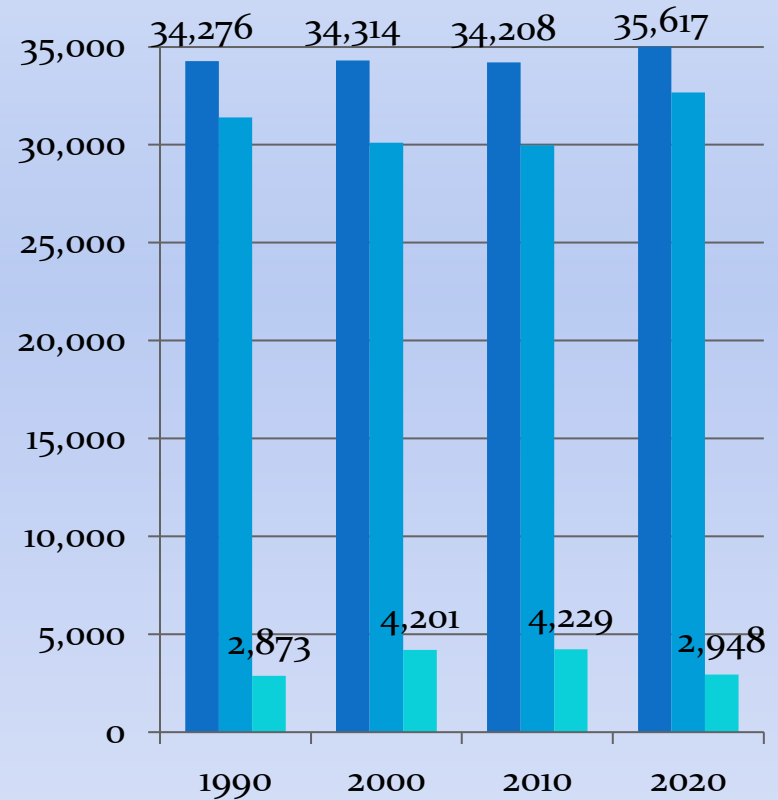
- Changes in family composition, lower birth rates, later marriages, and other factors have led to smaller household sizes.

Census 2020

Housing Unit Counts, 1990, 2000, 2010, 2020



■ Total ■ Occupied ■ Vacant
County

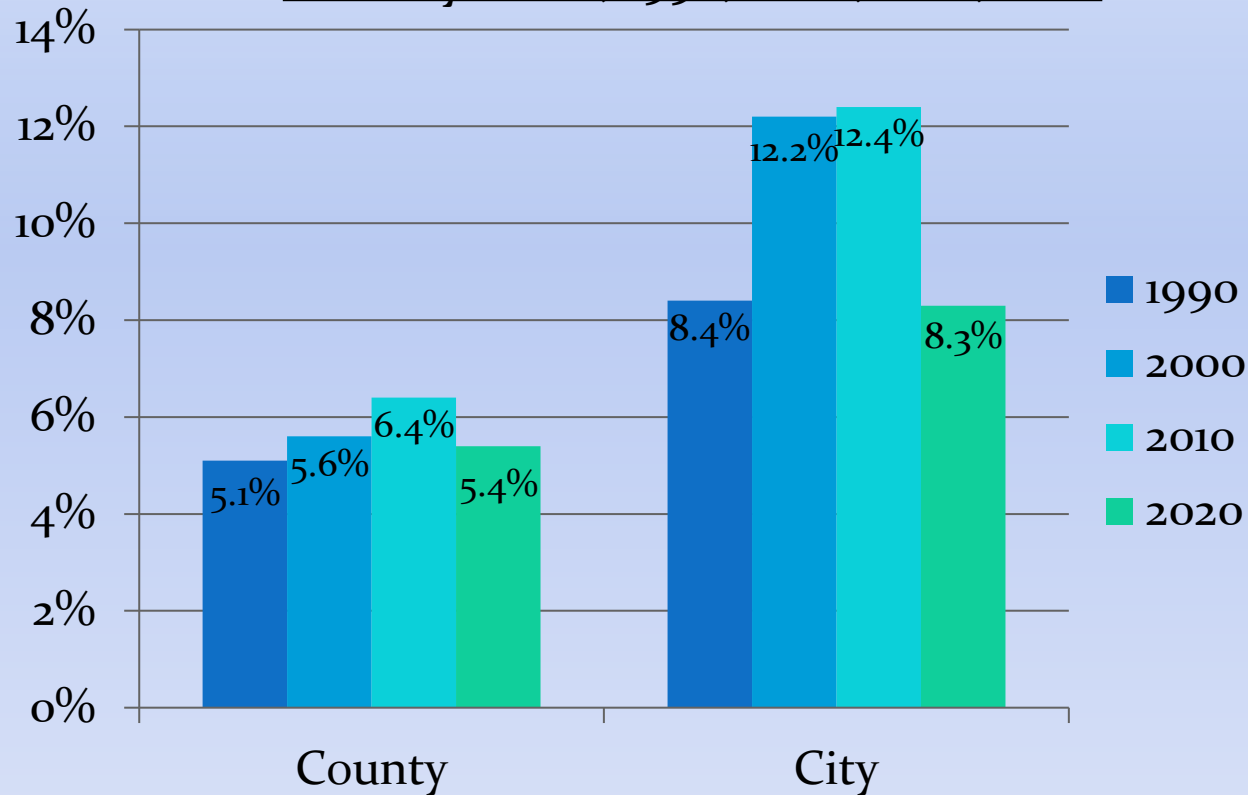


■ Total ■ Occupied ■ Vacant
City



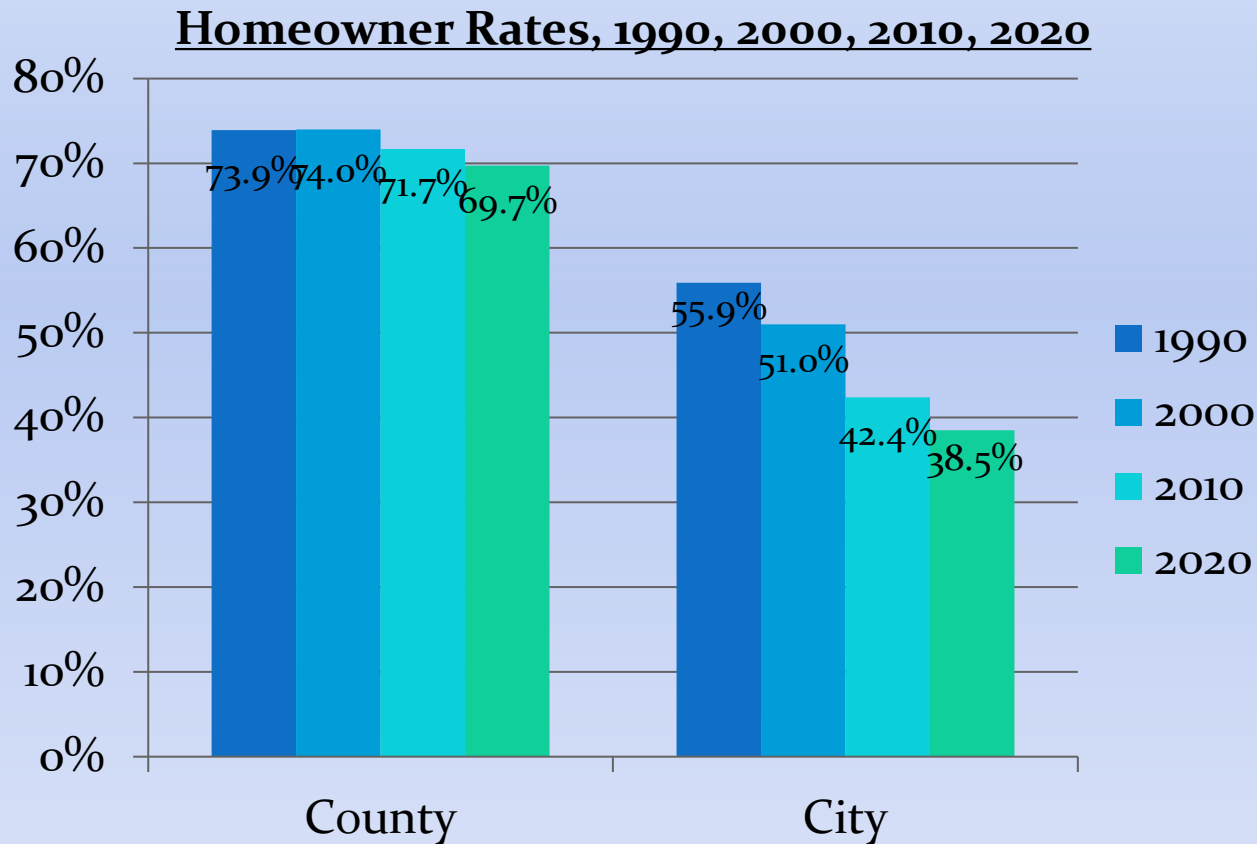
Census 2020

Vacancy Rates, 1990, 2000, 2010, 2020



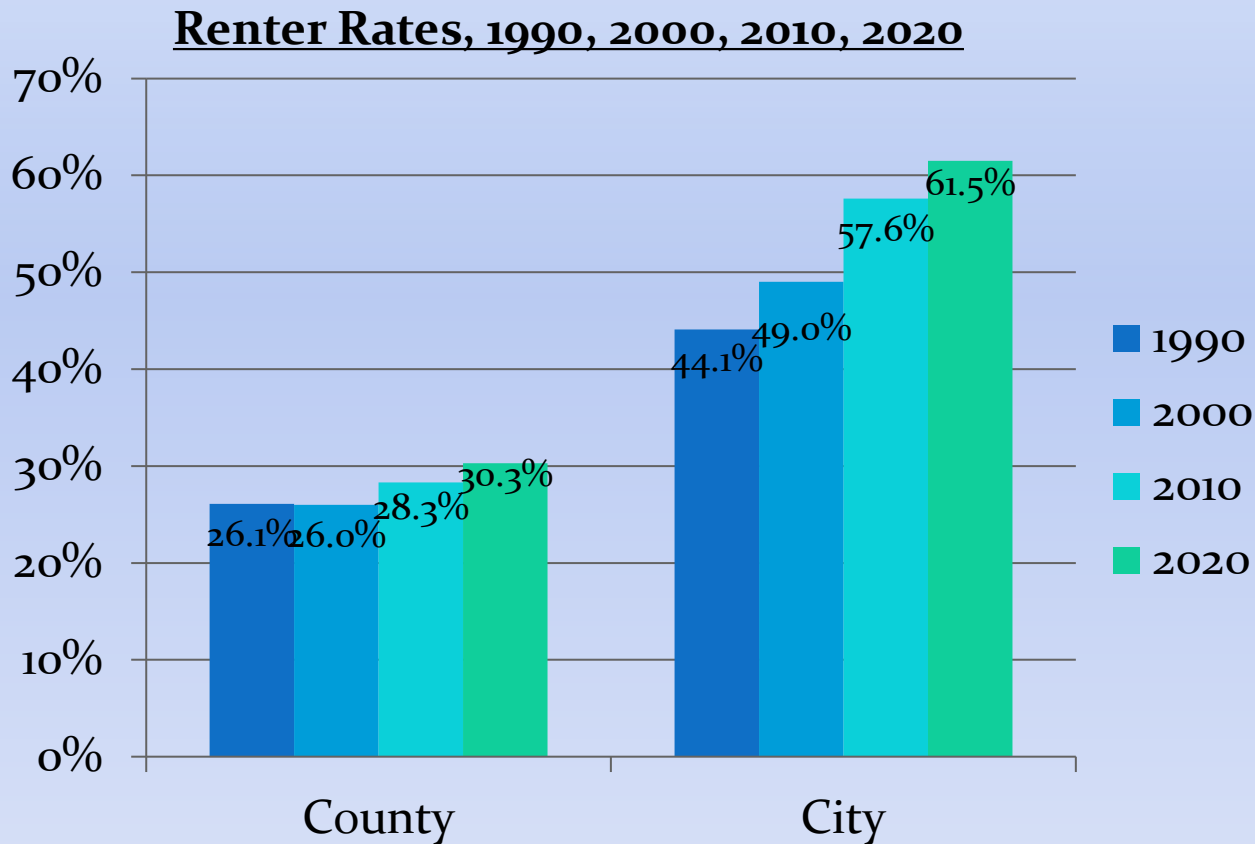
- Demand for housing has pushed vacancy rates to their lowest levels in decades.

Census 2020



- Homeownership is seen as a stabilizing force in neighborhoods and a measure of wealth-building.
- However, fewer persons want the responsibility of owning and maintaining a house.

Census 2020



- Conversely, rental rates are increasing.
- Growth in the City reflects a trend toward conversions of formerly single-family homes into multi-unit rentals.

Census 2020

Latino Tenure Rates, 2020



Census 2020

- What's Next:
 - Detailed Demographic and Housing Characteristics File A (Detailed DHC-A) (September 21, 2023)
 - Lots of detail down to various levels
 - Additional DHC- Releases in the coming months/years
- Ongoing American Community Survey (ACS)
 - Former 'long-form' data updates for various geographies
 - 2022 1-Year Estimates (September 14, 2023)
 - 2022 5-Year Estimates (December 7, 2023)

Census 2020

QUESTIONS???

